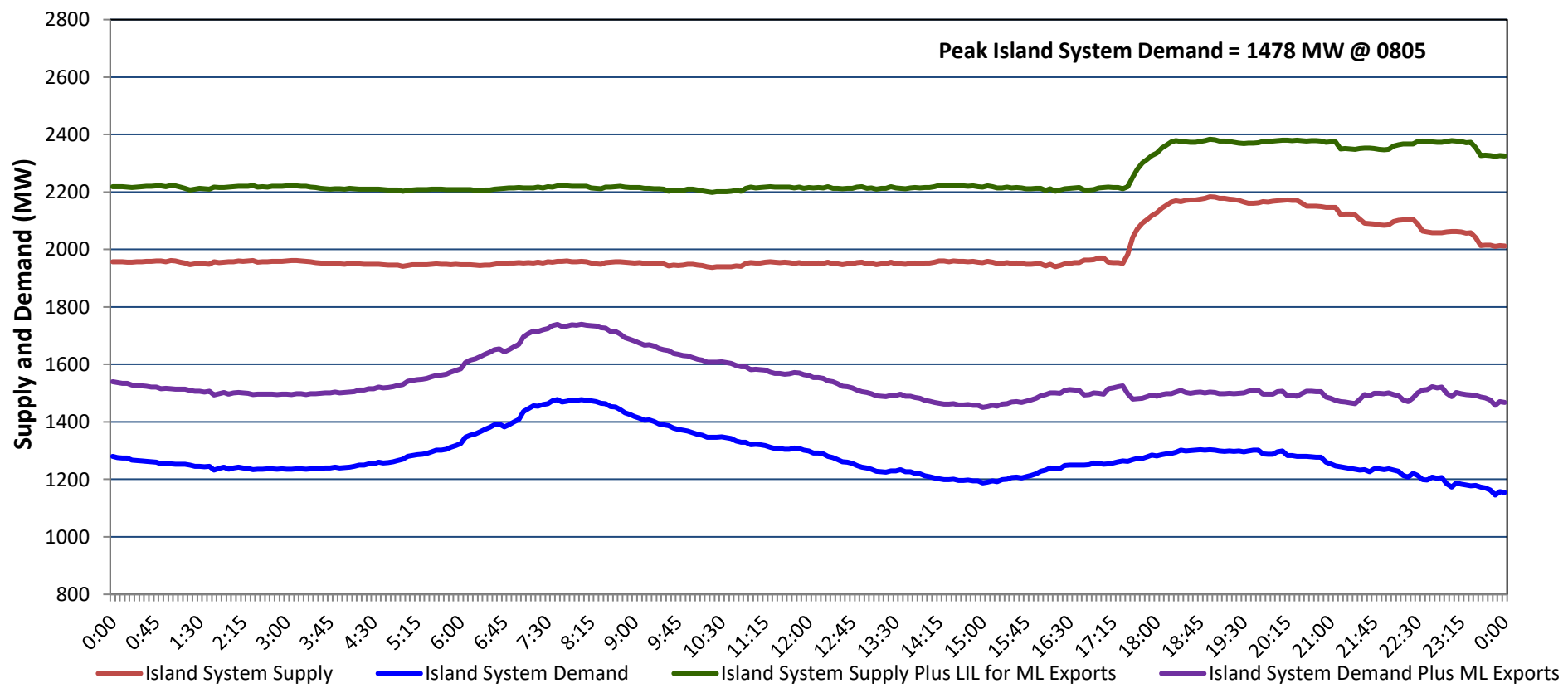


# Newfoundland Labrador Hydro (NLH) Supply and Demand Status Report Filed Thursday, March 06, 2025

## Section 1 Island Interconnected System - Supply, Demand & Exports Actual 24 Hour System Performance For Wednesday, March 05, 2025



### Island Supply Notes For March 05, 2025

- A** As of 1348 hours, February 19, 2025, Holyrood Unit 1 available at 105 MW due to forced derating (170 MW).  
**B** As of 0855 hours, March 04, 2025, Holyrood Unit 3 available at 130 MW due to forced derating (150 MW).  
**C** At 1654 hours, March 05, 2025, Labrador Island Link available at full capacity (700 MW) - Bipole.

## Section 2 Island Interconnected System - Supply, Demand & Outlook

Thu, Mar 06, 2025	Island System Outlook <sup>2</sup>	Seven-Day Forecast	Island System Daily Peak Demand (MW)	
			Forecast <sup>8</sup>	Adjusted <sup>6</sup>
Island System Supply: <sup>4</sup> NLH Island Generation: <sup>3,7</sup> NLH Island Power Purchases: <sup>5</sup> NP and CBPP Owned Generation: LIL/ML Net Imports to Island: <sup>9</sup>	<b>2,204 MW</b> 1,530 MW 110 MW 215 MW 349 MW	Thursday, March 6, 2025	<b>1,395</b>	<b>1,299</b>
		Friday, March 7, 2025	1,215	1,121
		Saturday, March 8, 2025	1,300	1,205
		Sunday, March 9, 2025	1,310	1,215
		Monday, March 10, 2025	1,415	1,319
		Tuesday, March 11, 2025	1,485	1,388
		Wednesday, March 12, 2025	1,365	1,269
7-Day Island Peak Demand Forecast:	<b>1,485 MW</b>			

### Island Supply Notes For March 06, 2025

- D** At 0724 hours, March 06, 2025, Bay d'Espoir Unit 2 unavailable due to planned outage (76.5 MW).

- Notes:
1. Generation outages for running and corrective maintenance are included. These are not unusual for power system operations. They generally do not impact customer supply. Hydro schedules outages to system equipment whenever possible to coincide with periods when customer demands are low and sufficient supply reserves are available. However, from time to time equipment outages are necessary and reserves may be impacted.
  2. As of 0800 Hours.
  3. Gross continuous unit output.
  4. Gross output from all Island sources (including Note 3).
  5. NLH Island Power Purchases include: ML Imports, Exploits Generation, Rattle Brook, Star Lake, Wind Generation and capacity assistance (when applicable).
  6. Adjusted for interruptible load and the impact of voltage reduction when applicable.
  7. Due to limitations inherent in the design of combustion turbines, the output of combustion turbines may be reduced in the event that ambient temperatures exceed the threshold required for full rated output. This threshold is dependent on the design of each turbine.
  8. Does not include ML Exports.
  9. LIL Import sunk in the Island System. Actual LIL flows will be restricted by various system conditions including, but not limited to, Island Load, ML Exports and Avalon Unit status.

## Section 3 Island Peak Demand and Exports Information Previous Day Actual Peak and Current Day Forecast Peak

Wed, Mar 05, 2025	Island Peak Demand <sup>10</sup>	8:05	1,478 MW
	Exports at Peak		262 MW
	LIL Net Imports to Island		1,566 MWh
Thu, Mar 06, 2025	Forecast Island Peak Demand		1,395 MW

- Notes: 10. Island Demand is supplied by NLH generation and purchases, LIL Imports plus generation owned and operated by Newfoundland Power and Corner Brook Pulp & Paper (Deer Lake Power, DLP).